

2020 VISION

Designers influencing the future of smart living

# belle

AUSTRALIA

Inside *Guy Sebastian's* Australian idyll



PACK & GO  
VOYAGE TO  
VIETNAM



CHECK PLEASE

Warm up  
with plaid  
& tartan

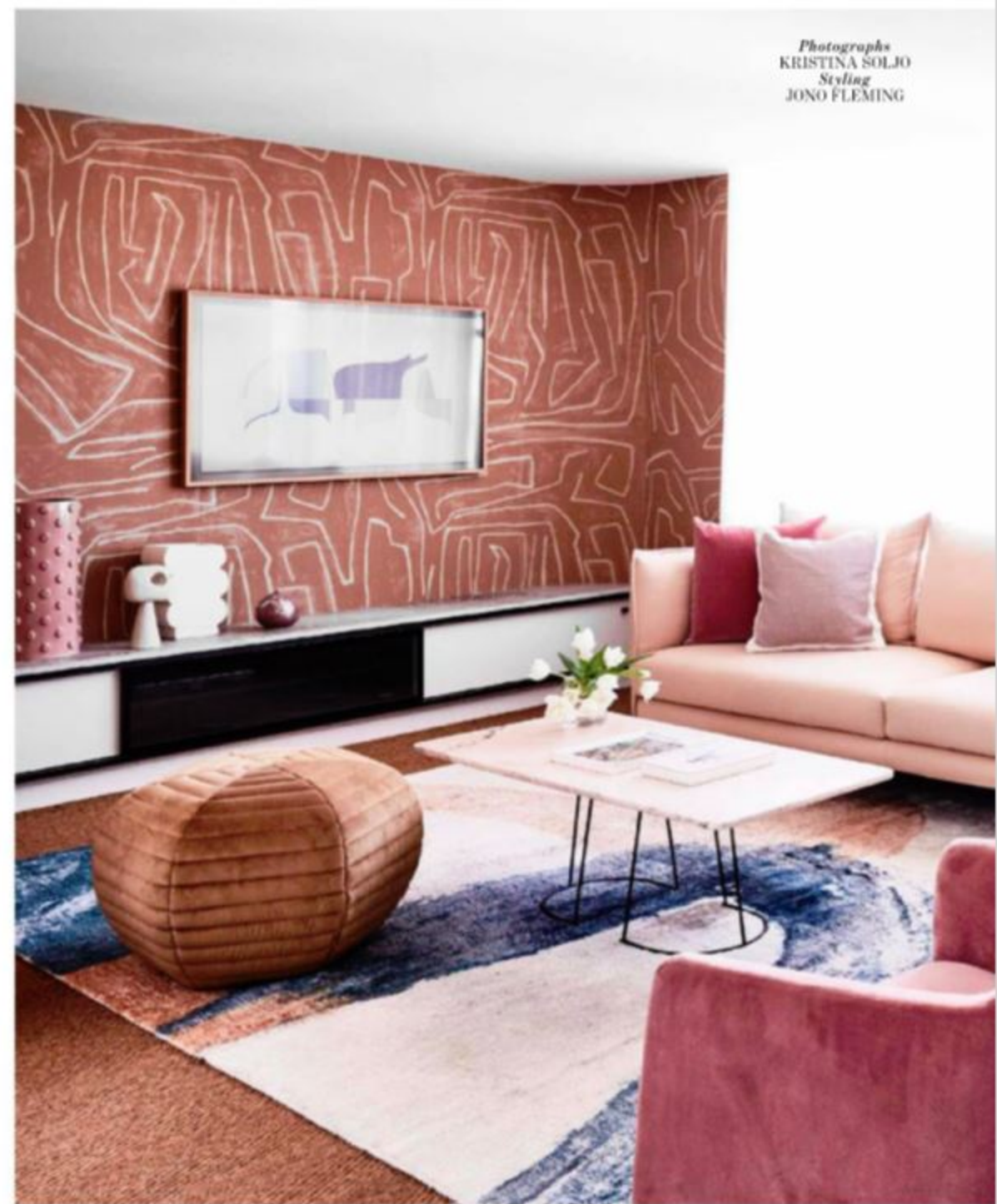
# SPACE CREATORS

70+ pages of inspiring & innovative interiors





INTERIOR DESIGNER  
*Strutt Studios*  
**SHELTERING SKY**  
*[ Neutral Bay ]*



Photographs  
KRISTINA SOLJO  
Styling  
JONO FLEMING

These pages, from left On the new private rooftop, Palissade collection outdoor dining table from Hay with 'Seam' chairs by Adam Cornish from Tait. The living area has a bold Kelly Wearstler wallpaper as its centrepiece. King Living 'Zaza' sofa by Charles Wilson with cushions from Jordan and Fogia 'Poppy' pouf from Fred International. On the console beneath the Samsung 'The Frame' television, L'Objet 'Teo' extra large vase from Becker Minty and resin vessel by Dinosaur Designs for Jordan. Sisal carpet throughout from The Natural Floorcovering Centres.



**SOPHIE BOWERS OF STRUTT STUDIOS** collaborated with stylist Jono Fleming on his parents' home renovation. [struttstudios.com](http://struttstudios.com); [jonofleming.com](http://jonofleming.com)  
*What was the brief?* Jono's parents, Peter and Tracy, engaged us to restore an uninhabitable penthouse into their 'forever' home, drawing on the surroundings and the interior's natural character. *What were the challenges of the space and how did you resolve them?* The original layout was confining and many structural elements had to be retained. The curving staircase had only cosmetic refurbishment due to compliance regulations. Another challenge was designing the rooftop to suit weight and height restrictions. We created distinct areas through multiple floor finishes. The result is an airy, bright space that maximises the views, a key driver in the couple's decision to purchase the property. *Describe the completed interior?* A balanced mix of era-specific influences and eclectic details. Bold patterns and textures on walls and floor

finishes bring character to the sophisticated architectural elements. The furniture and lighting incorporates colour and personality with black and brass accents. *What are some favourite elements? Were there any devices used to maximise the sense of space?* Some simple elements have had a huge impact: the black and brass staircase, rounded wall ends and circular fluted glass window all create a sense of space. These curves connect each room and bring a sense of comfort and creativity. The bold Kelly Wearstler wallpaper, selected by Jono to be the living room centrepiece, is a standout. *What informed the selection of art, furniture and fittings?* Finishes were influenced by the building. Rich blue and beige tones mirror the harbour to maximise the views. The furniture, lighting and artworks express the owners' personality. *Were the owners happy with the execution?* Peter and Tracy say they are enamoured with their new home: "Sophie listened to our wishes and worked out the most beautiful design we could wish for."

"RICH BLUE AND BEIGE TONES  
 MIRROR THE HARBOUR FORESHORE  
 TO MAXIMISE THE VIEWS."



STYLING ASSISTANT: HONGYI WANG

*This page* In the bedroom, an artwork by Antonia Mirjak from Curatorial & Co hangs above a King Living bed with a Sealy Posturepedic 'Crown Jewel Epernay' mattress from Snooze, and linen from Jordan. *Opposite page, clockwise from top left* Planter from Garden Life beside the updated spiral staircase with Skate or Die Sévres artwork by Magnus Gjaen. Kitchen bench slab from Caesarstone matched with tiles from Academy Tiles and a Zip HydroTap 'All-In-One Arc'. Cassina centrepiece (on kitchen bench) and side table, both by Jaime Hayon from Space. Artwork by Evi O. L'Objet 'Cubisme' candle from Becker Minty. Gubi chairs from Ownworld surround the dining table with Jordan 'Mist Petroleum Large' vase and Cassina centrepiece by Jaime Hayon from Space.